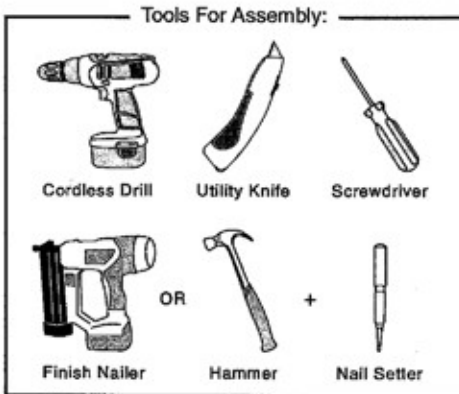


ASSEMBLY INSTRUCTIONS

Shelf and Bin Display

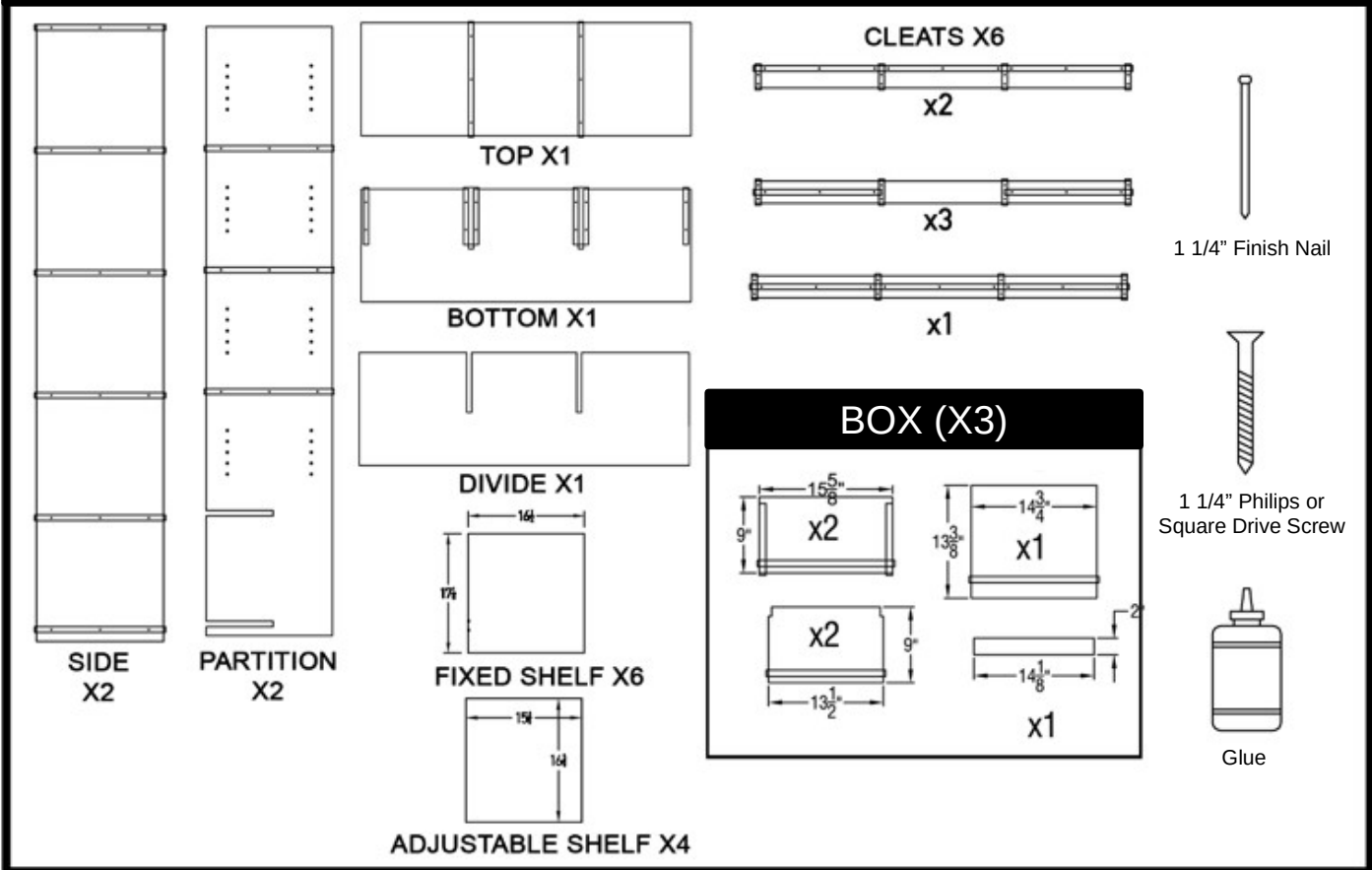
Thank you for purchasing this fine quality made in America product. When properly assembled and installed, your racking will complement your wine collection for many years to come. To ensure proper assembly please ascertain that all necessary parts have been included and follow the instructions closely.



If you are planning to stain or finish your racking we recommend you do so BEFORE assembly for best results.



PARTS LIST



PLEASE READ ALL PACKING AND INSTRUCTION MATERIAL BEFORE BEGINNING. PLEASE CONTACT US IF YOU HAVE ANY QUESTIONS OR CONCERNS BEFORE BEGINNING ASSEMBLY.

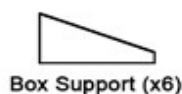
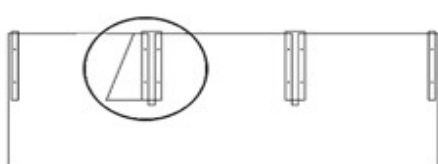
PACKAGE CONTENTS

SKU	PRODUCT NAME	SIDES	TOP/BOTTOM	ADJUSTABLE SHELF	FIXED SHELF	CLEATS	PARTITION	SCREWS
6_5-203-5025-8400	Shelf and Bin Display	2	2	4	6	6	2	200

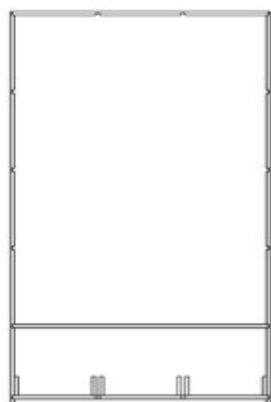
*Note: Please verify that you have the correct number of parts before proceeding.

PLEASE FOLLOW WRITTEN INSTRUCTIONS CAREFULLY

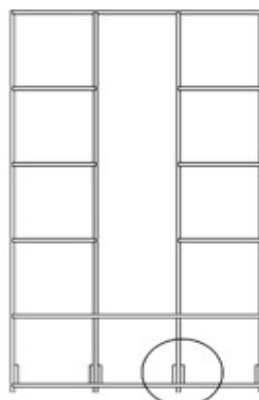
1. Find an open, flat area in which to assemble your racking. Carefully remove all components from the box and check all parts to verify package contents.



2. Attach box supports to bottom aligning with the guides on bottom.

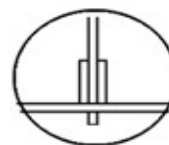


3. Attach top, divider and bottom to sides using the provided screws. The long, unbroken edge of the divider and bottom should face rear.

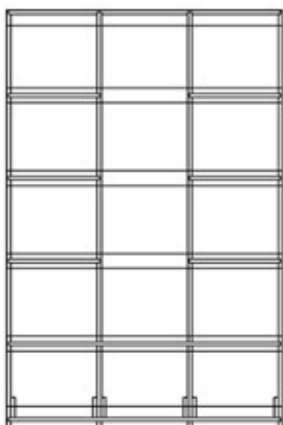


4. Attach partitions and fixed shelves to the sides using provided screws. The long, unbroken edge of the partition should face the front. Make sure the holes for the adjustable shelves face inward.

*Note: Make sure Dados on partitions face sides, so both side dados and partition dados will line up. Allowing for fixed shelves to slide in and be attached.



5. Attach box supports to the sides and partitions with provided screws.



6. Attach cleats, making sure to line the dados up with sides, top and bottom partitions and fixed shelves.



7. Take assembled boxes and insert them into space at bottom of cabinet, lifting box cleat over box support to secure.

BOX ASSEMBLY



Assemble box sides, front and back around bottom, making sure to place slot for box cleat on the outside of box. Fasten using provided screw, and use glue to attach cleat on bottom.

8. Attach adjustable shelves using the provided hardware.

9. Attach trim to finish cabinet assembly. Make sure to attach the top first, then the sides and partitions. The trim should stop at the top of the boxes.

*Note: For more stability attach racks to wall.