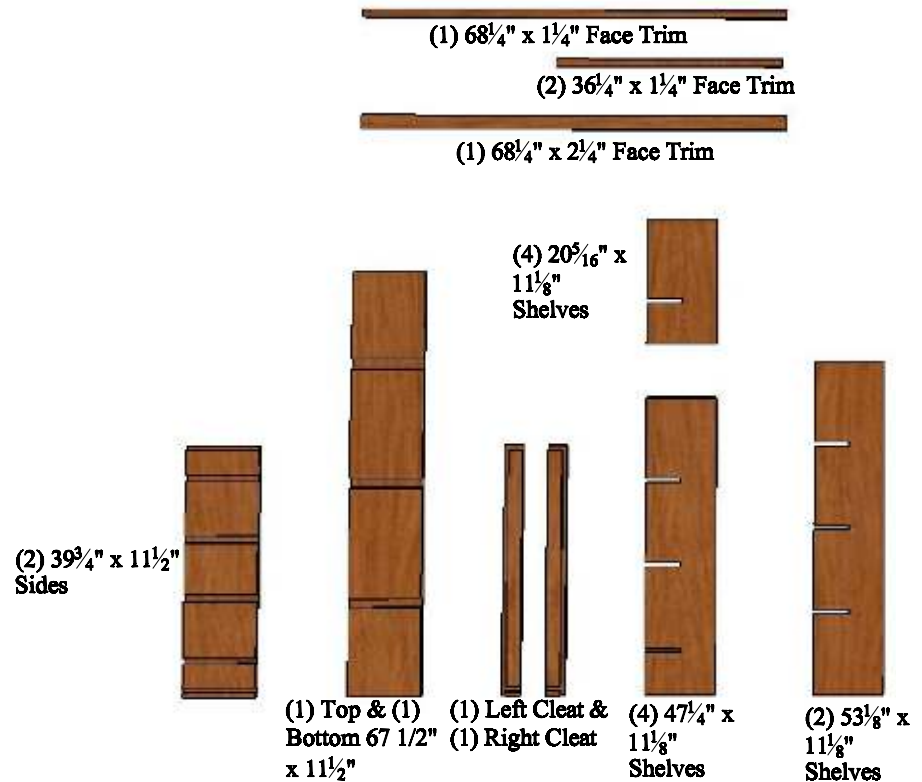


8_5-250-6825-3975

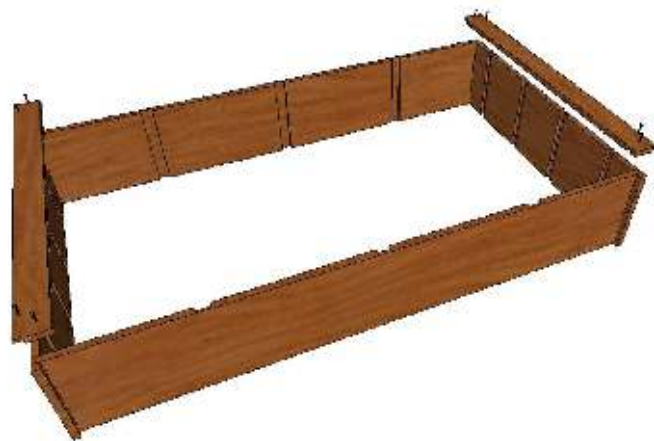
15 COLUMN COMPOUND DIAMOND BIN ASSEMBLY INSTRUCTIONS



PARTS LIST



STEP 1.
ATTACH (2) SIDES TO THE (1)TOP &
(1)BOTTOM w/ SCREWS. ENSURE SLOTS
ON SIDES ALIGN.



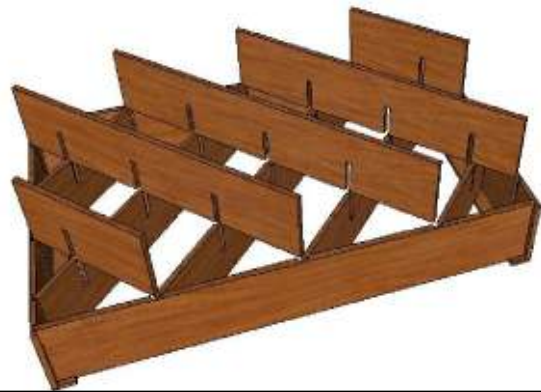
STEP 2.
ATTACH (1) LEFT & (1) RIGHT CLEAT w/
SCREWS

8_5-250-6825-3975

15 COLUMN COMPOUND DIAMOND BIN ASSEMBLY INSTRUCTIONS



STEP 3.
FLIP BIN OVER. SLIDE (2) SHORT
SHELVES, (2) MEDIUM LENGTH SHELVES
& (1) LONG SLELF INTO SLOTS AS SHOWN.
ENSURE SHELF NOTCHES FACE UP AND
ALIGN.



STEP 4.
SLIDE (2) SHORT SHELVES, (2) MEDIUM
LENGTH SHELVES & (1) LONG SLELF INTO
SLOTS AS SHOWN. ENSURE SHELF
NOTCHES FACE DOWN AND ALIGN.



STEP 5.
ATTACH (1) $2\frac{1}{4}$ " x $68\frac{1}{4}$ " FACE TRIM TO
BOTTOM OF BIN, (1) $1\frac{1}{4}$ " x $68\frac{1}{4}$ " FACE
TRIM TO TOP & (1ea.) $1\frac{1}{4}$ " x $34\frac{1}{4}$ " FACE
TRIM TO EACH SUDE OF BIN w/ FINISH
NAILS.