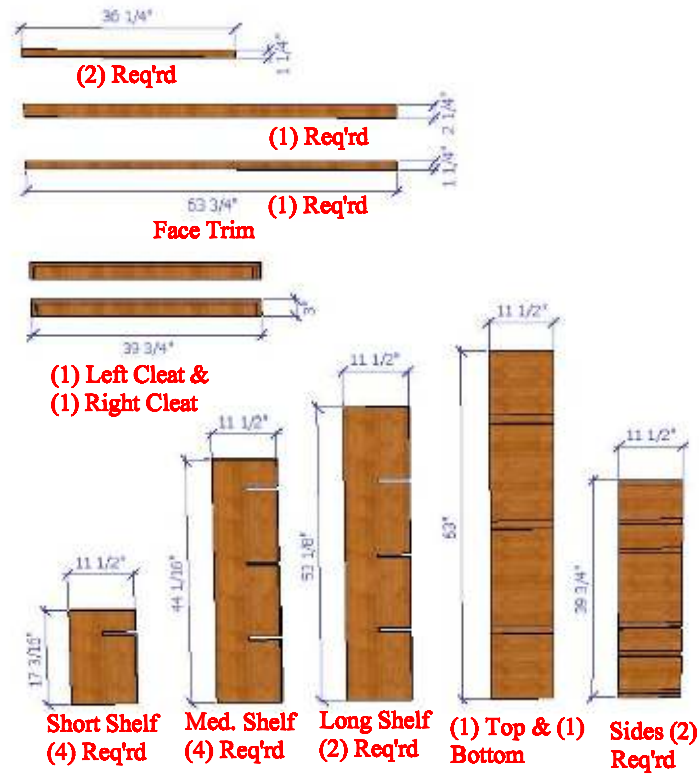


8_5-250-6375-3975

14 COLUMN COMPOUND DIAMOND BIN

ASSEMBLY INSTRUCTIONS



PARTS LIST



STEP 1.
ATTACH (2) SIDES TO THE (1)TOP & (1)BOTTOM w/ SCREWS. ENSURE SLOTS ON ALL PIECES ALIGN WITH OPPOSITE COMPONENT.

STEP 2.
ATTACH (1) LEFT & (1) RIGHT CLEAT w/ SCREWS

8_5-250-6375-3975

14 COLUMN COMPOUND DIAMOND BIN ASSEMBLY INSTRUCTIONS



STEP 3.
FLIP BIN OVER. SLIDE (2) SHORT
SHELVES, (2) MEDIUM LENGTH SHELVES
& (1) LONG SLELF INTO SLOTS AS SHOWN.
ENSURE SHELF NOTCHES FACE UP AND
ALIGN.

STEP 4.
SLIDE (2) SHORT SHELVES, (2) MEDIUM
LENGTH SHELVES & (1) LONG SLELF INTO
SLOTS AS SHOWN. ENSURE SHELF
NOTCHES FACE DOWN AND ALIGN.



STEP 5.
ATTACH (1) $2\frac{1}{4}$ " x $63\frac{3}{4}$ " FACE TRIM TO
BOTTOM OF BIN, (1) $1\frac{1}{4}$ " x $63\frac{3}{4}$ " FACE
TRIM TO TOP & (1ea.) $1\frac{1}{4}$ " x $36\frac{1}{4}$ " FACE
TRIM TO EACH SIDE OF BIN w/ FINISH
NAILS. STAND UPRIGHT



STEP 6.
COMPLETED BIN