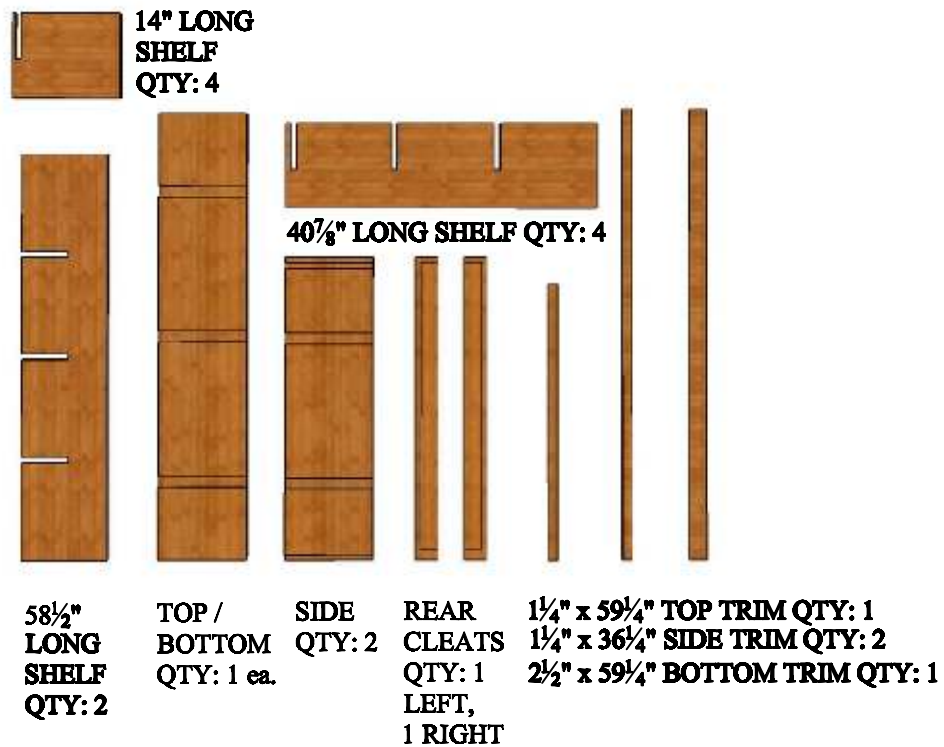


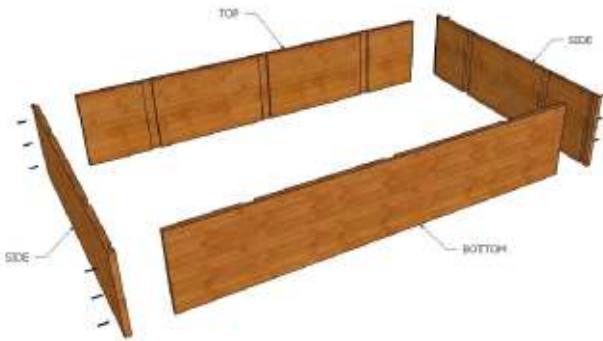
13 COLOUMN BASE COMPOUND DIAMOND BIN ASSEMBLY INSTRUCTIONS



PARTS LIST



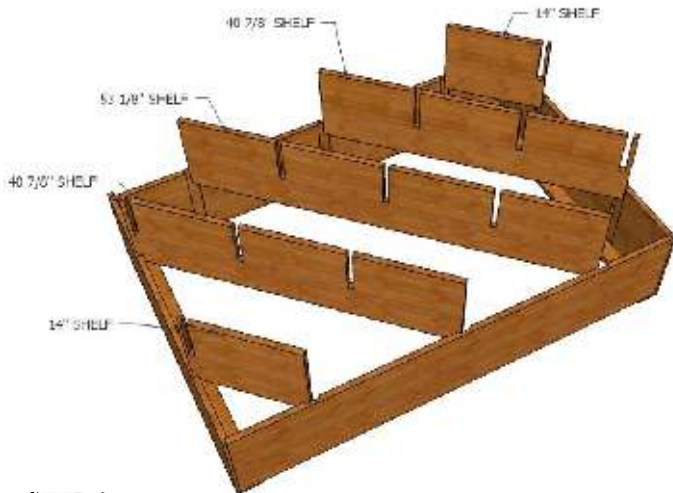
13 COLOUMN BASE COMPOUND DIAMOND BIN ASSEMBLY INSTRUCTIONS (cont.)



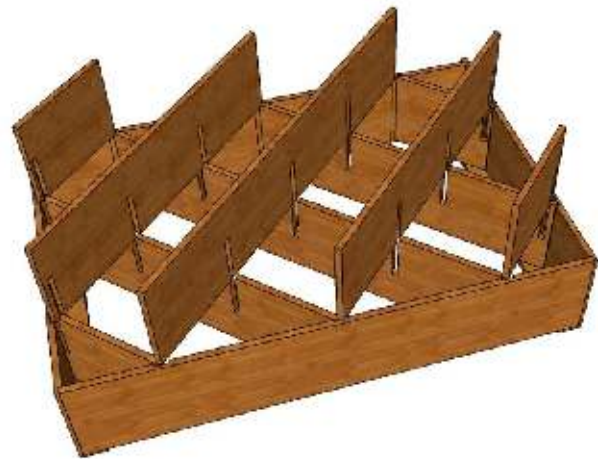
STEP 1.
ATTACH TOP AND BOTTOM TO BOTH SIDES
WITH (6) SCREWS AS SHOWN



STEP 2.
ATTACH LEFT AND RIGHT CLEATS TO BACK
OF BIN WITH GLUE AND SCREWS AS SHOWN



STEP 3.
FLIP BIN OVER. LOCATE (1) 58½"LONG SHELF, (2)
40⅞" LONG SHELVES AND (2) 14" LONG SHELVES.
SLIDE SHELVES INTO SLOTS AS SHOWN WITH
SHELF NOTCHES FACING UPWARD.



STEP 4.
LOCATE REMAINING (1) 58½"LONG SHELF(2) 40⅞"
LONG SHELVES AND (2) 14" LONG SHELVES. SLIDE
SHELVES INTO SLOTS AS SHOWN WITH SHELF
NOTCHES FACING DOWNWARD.

STEP 5.
ATTACH FACE TRIM TO FRONT OF
BIN W/ NAILS. SET BIN UPRIGHT.

