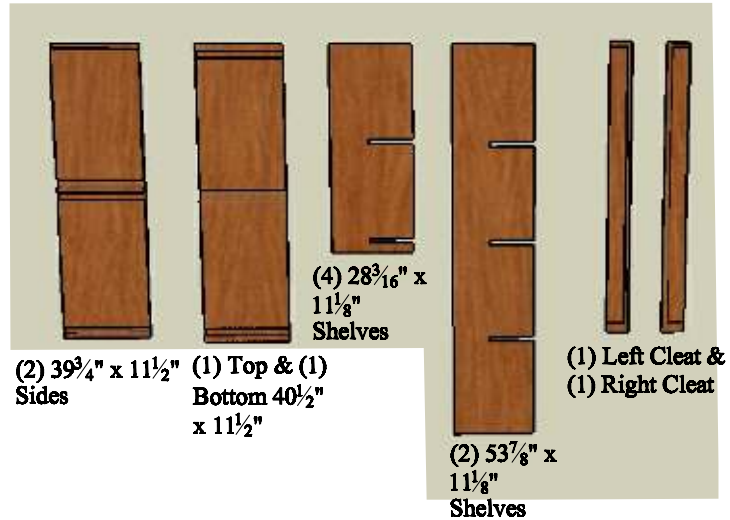
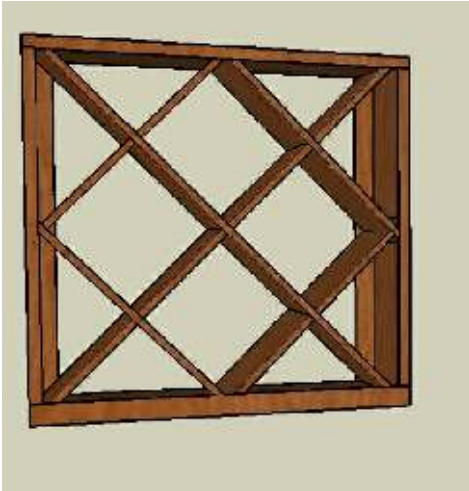


# 8\_5-250-4125-3975

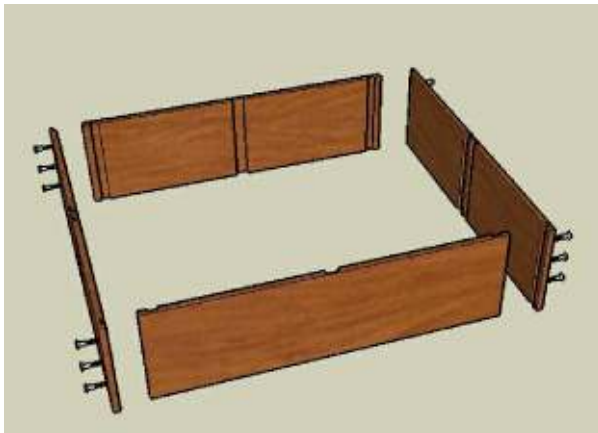
## 9 COLUMN COMPOUND DIAMOND BIN

### ASSEMBLY INSTRUCTIONS

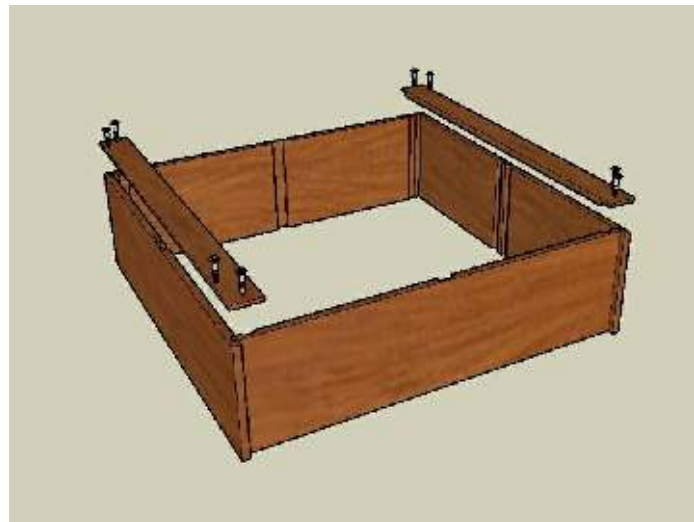


- (1)  $41\frac{1}{4}$ " x  $1\frac{1}{4}$ " Face Trim
- (1)  $41\frac{1}{4}$ " x  $2\frac{1}{4}$ " Face Trim
- (2)  $36\frac{1}{4}$ " x  $1\frac{1}{4}$ " Face Trim

#### PARTS LIST



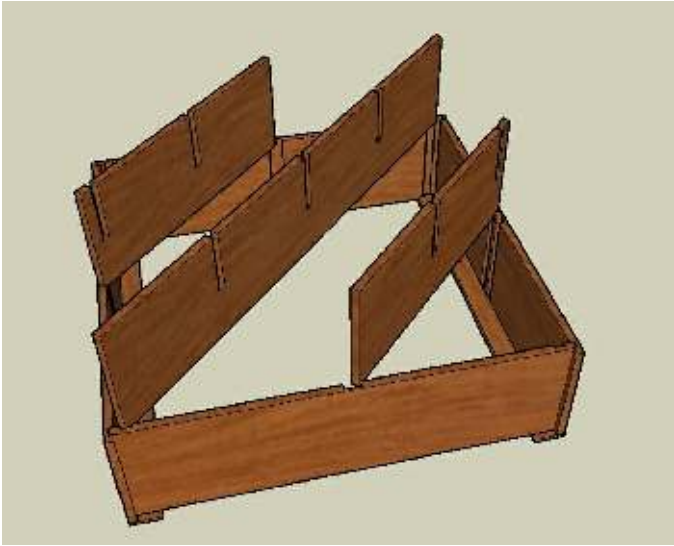
**STEP 1.**  
ATTACH (2) SIDES TO THE TOP & BOTTOM  
w/ SCREWS. ENSURE SLOTS ON SIDES  
ALIGN.



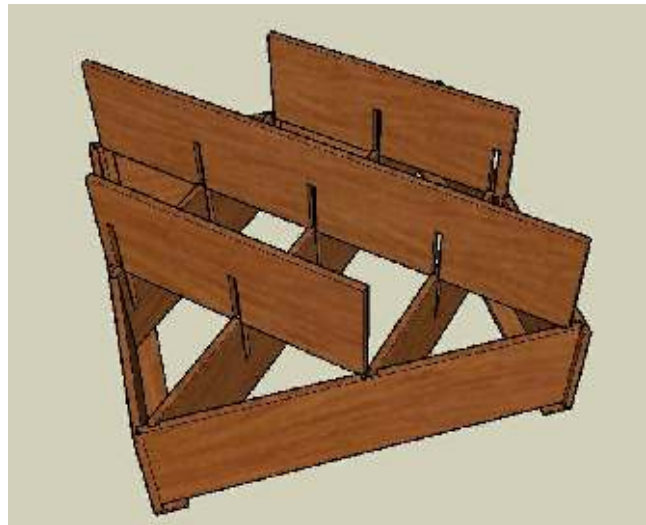
**STEP 2.**  
ATTACH (1) LEFT & (1) RIGHT CLEAT w/  
SCREWS

8\_5-250-4125-3975

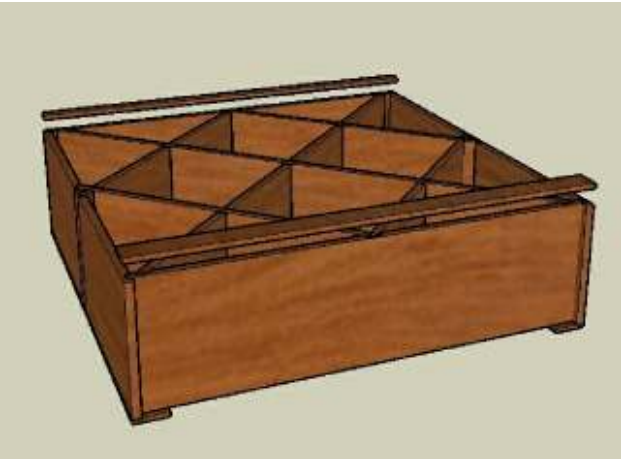
## 9 COLUMN COMPOUND DIAMOND BIN ASSEMBLY INSTRUCTIONS



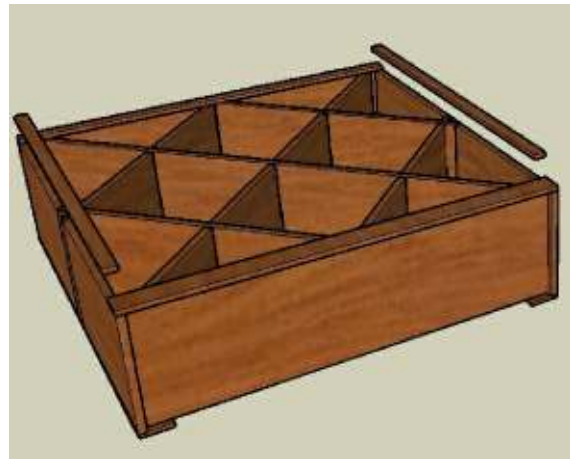
**STEP 3.**  
FLIP BIN OVER. SLIDE (2) SHORT SHELVES  
& (1) LONG SLELF INTO SLOTS AS SHOWN.  
ENSURE SHELF NOTCHES FACE UP AND  
ALIGN.



**STEP 4.**  
SLIDE (2) SHORT SHELVES & (1) LONG  
SLELF INTO SLOTS AS SHOWN. ENSURE  
SHELF NOTCHES FACE DOWN.



**STEP 5.**  
ATTACH (1)  $2\frac{1}{4}$ " x  $41\frac{1}{4}$ " FACE TRIM TO  
BOTTOM OF BIN, (1)  $1\frac{1}{4}$ " x  $41\frac{1}{4}$ " FACE  
TRIM TO TOP OF BIN w/ FINISH NAILS.



**STEP 6.**  
ATTACH (2)  $1\frac{1}{4}$ " x  $36\frac{1}{4}$ " FACE TRIM TO  
SIDES OF BIN w/ FINISH NAILS. STAND  
UPRIGHT