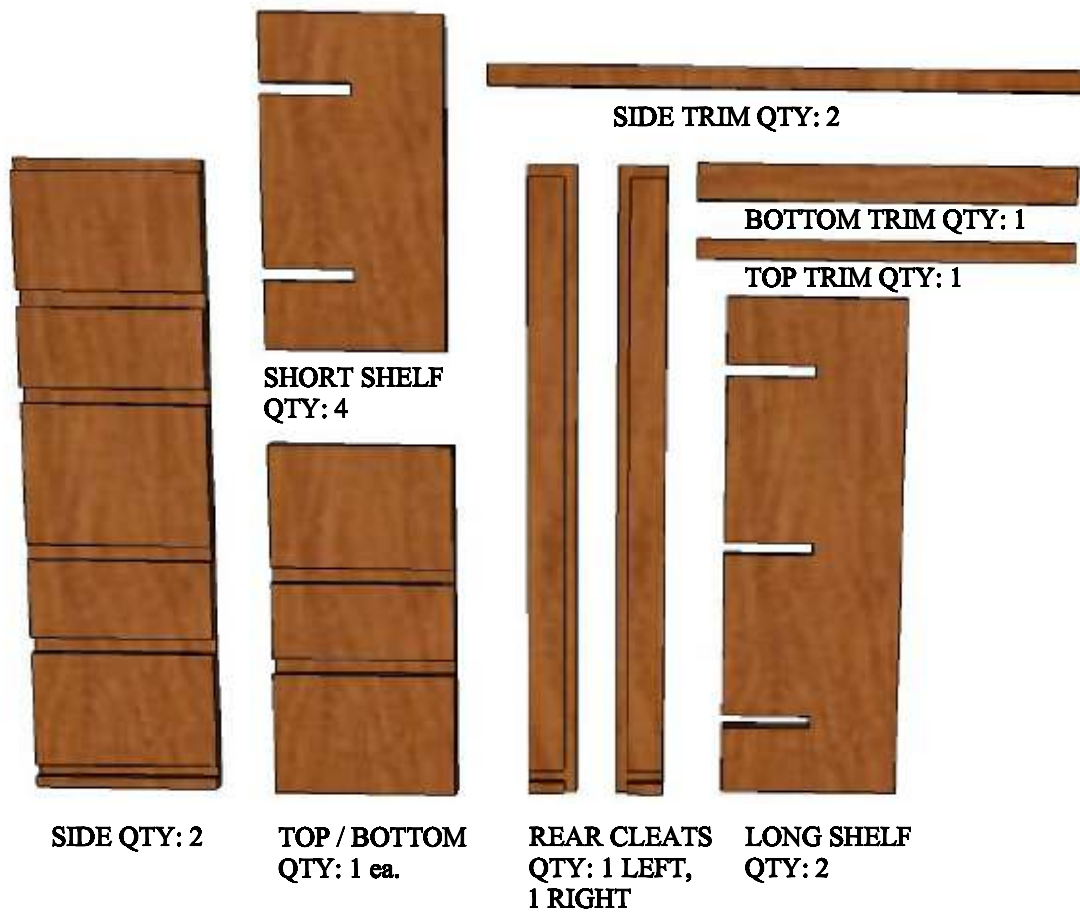


**5 COLOUMN BASE COMPOUND
DIAMOND BIN
ASSEMBLY INSTRUCTIONS**



PARTS LIST



**ITEMS SUPPLIED BUT NOT SHOWN:
24 - WOOD SCREWS
1 TUBE OF GLUE
NAILS FOR FACE TRIM**

**5 COLOUMN BASE COMPOUND
DIAMOND BIN
ASSEMBLY INSTRUCTIONS (cont.)**



STEP 1.
ATTACH TOP AND BOTTOM TO BOTH SIDES
WITH GLUE AND (6) SCREWS AS SHOWN



STEP 2.
ATTACH LEFT AND RIGHT CLEATS TO BACK
OF BIN WITH GLUE AND SCREWS AS SHOWN



STEP 3.
FLIP BIN OVER. LOCATE (1) LONG SHELF AND (2)
SHORT SHELVES. SLIDE SHELVES INTO SLOTS AS
SHOWN WITH SHELF NOTCHES FACING UPWARD.



STEP 4.
LOCATE REMAINING (1) LONG SHELF AND (2) SHORT
SHELVES. SLIDE SHELVES INTO SLOTS AS SHOWN
WITH SHELF NOTCHES FACING DOWNWARD.

STEP 5.
ATTACH FACE TRIM TO FRONT OF
BIN W/ NAILS PROVIDED. SET BIN
UPRIGHT.

